



The Bugle



January 2025

Officers & Directors

President/
Becky Kalagher 508-476-3960
bstra@charter.net

Vice President/Clerk

Treasurer
Karen Parlin 774-293-0051
kpschip@aol.com

Recording Secretary
Rose Zariczny 401-487-3190
rzariczny@verizon.net

Valerie Clark 508-864-8432
Valerie.clark@snet.net

Suzanne Nicholas
508-380-2124
hc07645@gmail.com

Sue Quirk 508-883-5821
quirksuzie@comcast.net

Joyce Sandvik 617-429-1319
jscanion@charter.net

Kelly Shaw 774-276-0260
krshaw13@gmail.com

Sharron Cochran
413-668-7606
hiddenhollowacres@comcast.net

Mary Wood 845-264-2946
Fundraising
marymariewood@gmail.com

Editors
Becky Kalagher
Anna Maria Paul

BSTRA Ribbon Cutting Ceremony



On December 8th, 26 people gathered to commemorate the culmination of three years of dedicated work. With the help of 38 dedicated volunteers, our sponsors, and donated materials and equipment, we now have a beautiful connector trail between the SNETT and the trails behind the Douglas Schools. This

property was once owned by the Gates family, and from the old farm, we preserved an old 1973 Chevy and the frame of a 1927 Peerless Sedan (since a tree had grown around the rear axle, it was easier to leave it!). Both vehicles now have signs showing what they looked like new along with their details.



The 20-foot bridge was made possible by a grant from Two For The Trails (Athletic Brewing Company), and the 16-foot bridge was sponsored by Unibank, Yered Trailers, and Whitehorse Truck

and Trailer Service. Both bridges are made from durable fiberglass-reinforced plastics (FRP) with decking covered in geotextile material topped with pea stones, ensuring their longevity.

Many thanks to Representative Joseph McKenna for attending the ceremony with his oldest son. Also in attendance were two members of the Douglas Board of Selectmen, Michael Fitzpatrick and Ross Smith. After the ribbon-cutting ceremony, we walked the Gates Lane Trail to the town-owned property and on the way back, we walked the Peerless Relic Path.

We're also deeply grateful to Bill Porter of WHP Trucking & Excavating for his

(Continued on page 2)



donation to install the granite pieces for the 20' bridge abutments and all the gravel needed for the ramps. John Enright for the donation of the two 8' granite pieces that the 16' bridge now rests on, and Alex Aquadro for his time and equipment for getting the bridges in place, digging some holes and tractor use to move three loads of gravel and a few rocks!

A great deal of gratitude goes to the following for all their volunteer time in the past three years to get this project completed: Becky Kalagher, Phil & Jane Rutledge, Robert Hatch, Stephanie Friend, Alex & Shelby Aquadro, Rita & Buzz Ballou, Darlene Falcone, Valerie Clark, Cheryl Fitzpatrick, Ed Nobrega, Celeste Nobrega, Ray Hill, Sue & Steve Sanders, Gloria Duhaime, Katherine Petersson, Kelly Berthiaume, MaryEllen Coyne, Neil & Shirley Standring, Barbara McCumber, Rose Zariczny, Julia Taddei, Christine DiMasi, Lee & Lynn Paresky, Bill Knott, Karen Parlin, Suzie Fancher, Janeen Rose, Kathy Rich, Michael Joubert, Bruce Rioux, Ann Degnan, and Frank Whitney. Their dedication ensures that these new trails will be enjoyed for years to come.

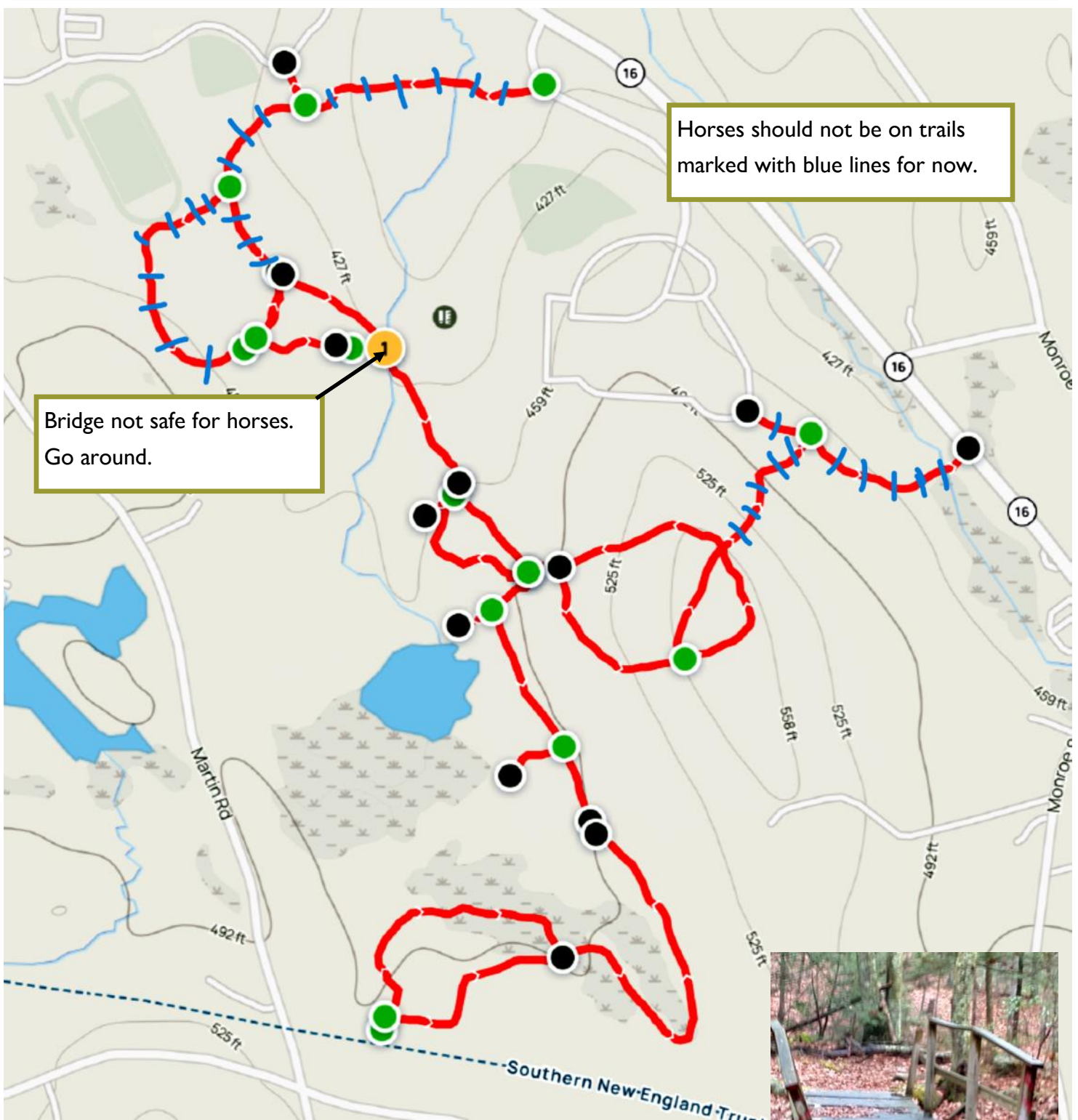


This project had 302 hours of on the ground work, 37 hours of oversight, meetings, and paperwork. This alone is worth \$13,285. Actual project cost not counting the cost of the property is as follows: Donations of material & equipment services \$3,900. Two for the Trails Grant \$10,000. Cash \$19,051 for a total of \$32,951.

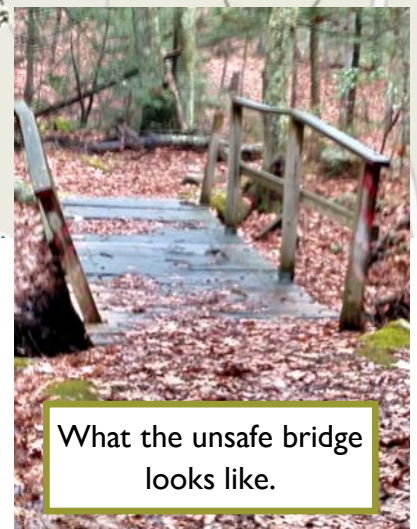
Next step, transferring the property to Metacomet Land Trust to preserve it forever.

They are in the land business, so it's the proper place for it to end up. **BK**





Map of our trails and the trail behind the Douglas Schools. The parts of the trail that have the blue triangles on them don't tie into anything or part of it's not passable, so it's preferable that we don't use those sections.



**IMPORTANT
MEMBERSHIP INFO**



Our Printer has retired and it's been quite the eye opener trying to find a replacement. All the price quotes have been much higher than what we have been paying. Higher postage rates and the time needed to put the paper copies of The Bugle together, label, and mail has led to the discussion by the Board of Directors to think about raising membership dues. The decision was made to transition to sending out the monthly newsletter by email beginning with the February issue. Some members have told us that they would pay extra to get a mailed printed copy. To that end, \$25 will be an added fee. If you agree to the emailed (in color) version, which we highly recommend, please make sure we get your preferred email address. Please note that the newsletter is also on our website and under archives, we have the last 12 issues of the newsletter too. Thank you for understanding.

Items for your TO DO LIST

- ◆ Renew your membership for 2025
- ◆ Give a gift of a BSTRAs membership to a friend.

Ryan Rudy
Owner

Whitehorse

Truck & Trailer Service & Sales
508-641-9212
"We come to you"

Proud to Sponsor BSTRAs!

Millbury - (508) 865-3800
www.UnitedEquip.com

**KOOPMAN
LUMBER & HARDWARE**

**SERVING NEW ENGLAND
SINCE 1939!**

SHOP ONLINE LEARN MORE
shopkoopman.com koopmanlumber.com

Offering a Complete Line of Equine Supplements

HorseTech®
www.horsetech.com

Awesome Supplements...
Amazing Service!
(and free cookies, too!) *Always Free Shipping!*

Glänzen
Hoof, Coat & Attitude!

Order Online at: www.horsetech.com
Order By Phone at: (800) 831-3309
service@horsetech.com

**From The Horse's
Mouth, LLC**

Dave Ribeiro, C/eqDT
Direct: 508-846-6065
Office: 774-213-9580
Dave@FromTheHorsesMouthNE.com
www.FromTheHorsesMouthNE.com

Serving New England's
Equine Dental Needs

**Certified by the International
Association of Equine Dentistry**

Fundraising Coordinator Needed

Imagine the boundless potential of Bay State Trail Riders Association, Inc. (BSTRA) with a dedicated Fundraising Coordinator at the helm. This pivotal role is more than just a title—it's the heart and soul of our community efforts to preserve and enhance the trails we all cherish.



Firstly, a Fundraising Coordinator would bring a focused and strategic approach to our financial initiatives, ensuring we have the resources needed to maintain and expand our trail network. He or she would foster relationships with donors, sponsors, and grant-giving bodies, turning goodwill into tangible support.

Moreover, this role is crucial for organizing events and campaigns that not only raise funds but also build community spirit. By connecting passionate trail riders, local businesses, and supporters, the Coordinator would create memorable experiences that inspire ongoing engagement and contribution.

Lastly, the impact of a Fundraising Coordinator extends beyond the monetary aspect. Your efforts would amplify our mission, spreading awareness about the importance of trail conservation and outdoor recreation. This would attract new members and volunteers, enriching our association and ensuring the longevity of our trails for future generations.

In essence, a Fundraising Coordinator is the linchpin that holds together the vision of a thriving and sustainable BSTRA, making our shared dreams a reality. If you are this person, we need you. Please contact us at bstra@charter.net



EquidDoc
Veterinary Services

Dr Caitlin Eaton & Associates

EquidDocVet.com


M-F 8:30-4:30 Office 508-885-4205



Sharron Cochran
Realtor® MA

Tel 800.859.2745, ext 722
Cell 413.668.7606
sharron@equinehomes.com

WWW.EQUINEHOMES.COM
NEW ENGLAND AND FLORIDA



Bitten By A Tick? Visit TickCheck.com

TickCheck.com is a university lab that can test your tick for Lyme & other tick-borne diseases. We also provide FREE tick identification!

- REMOVE THE TICK AND PLACE IN A SEALED PLASTIC BAG
- VISIT TICKCHECK.COM AND CHOOSE DISEASES TO TEST TICK FOR
- MAIL THE TICK TO THE TICKCHECK LABORATORY
- GET YOUR TICK TEST RESULTS WITHIN 24-48 HOURS

USE COUPON TICKREMOVER FOR 10% OFF ANY TICK TEST



Homefield
credit union

Banking with a Homefield Advantage.

Rhode Island acquires 942 acres of forest in Burrillville

The Rhode Island Department of Environmental Management (DEM) announced that it bought the parcel of land from the Rhode Island Boy Scouts (RIBS).

The DEM was awarded a \$1.2 million grant from the U.S. Fish and Wildlife Service and a \$301,250 award from the National Fish and Wildlife Foundation to help with the \$1,610,000 purchase.

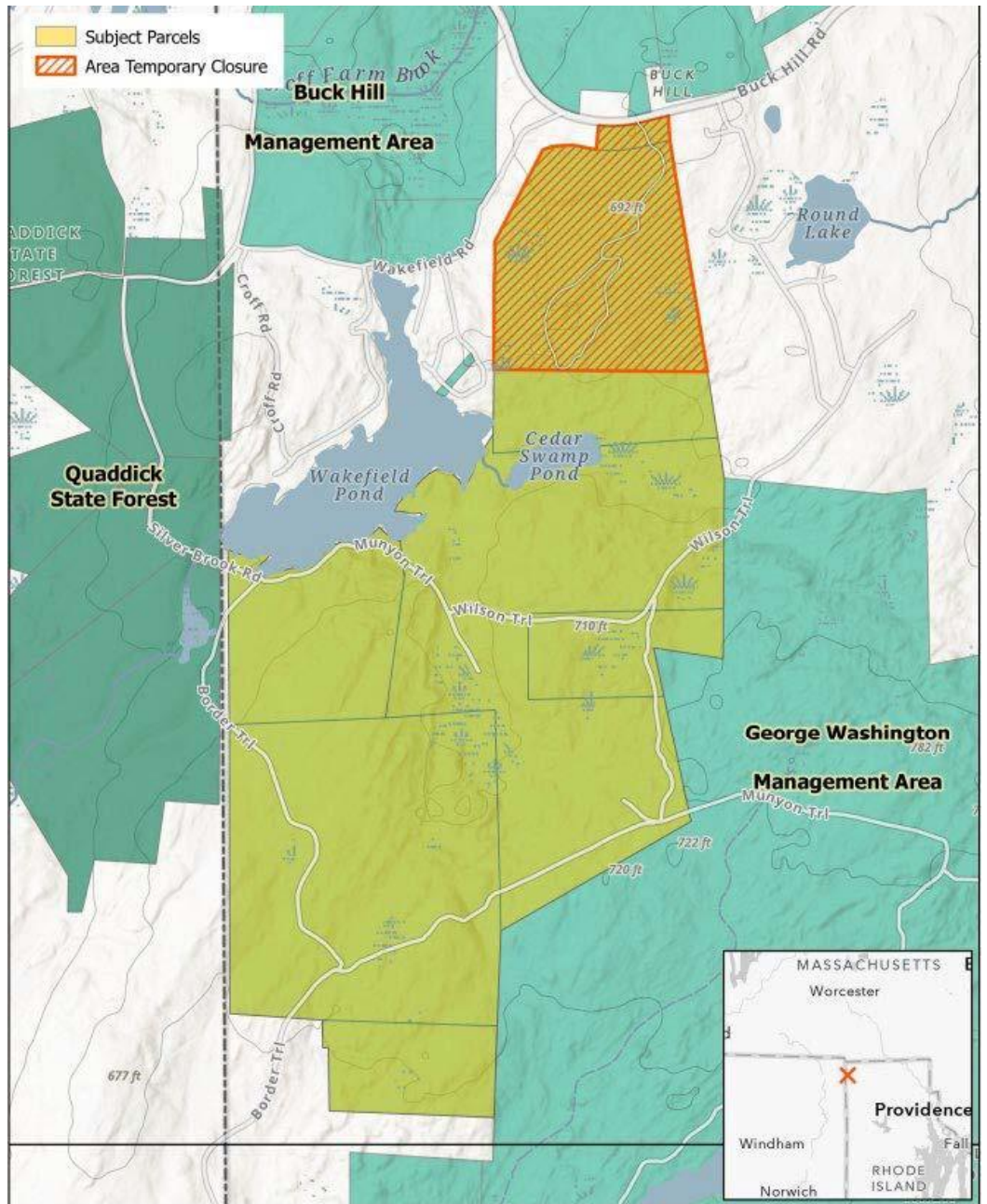
The property will be incorporated into the Buck Hill Management Area and open for hunting, fishing and other outdoor recreational uses.

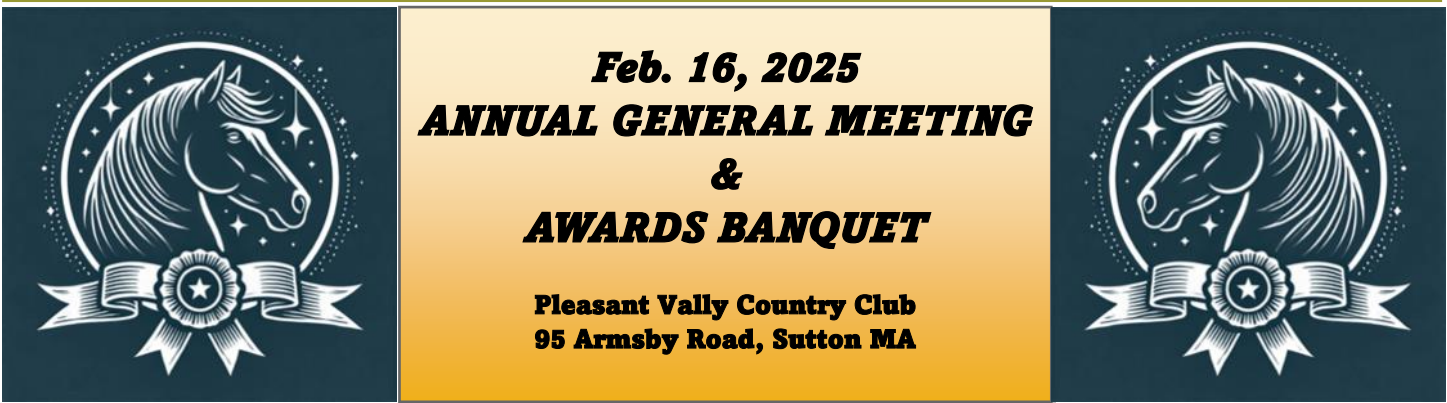
This purchase will help connect the more than 4,000 acres of land from the George Washington Management Area and Pulaski

State Park with the 2,200 acres of land from the Buck Hill Management Area. Conserved land in Massachusetts and Connecticut also connects to the parcel, resulting in more than 13,000 acres of contiguous protected area.

“Conserving such a large parcel of connected forestland is a huge win for preserving Rhode Island’s natural resources and increasing public access to the outdoors,” DEM Director Terry Gray said.

A portion of the property will be temporarily closed to the public for site improvements. The rest of the property can be accessed from the George Washington Management Area.





LUNCHEON BUFFET:

Tossed Garden Salad, Seasonal Fresh Fruit Salad, Warm Rolls & Butter, Pasta Primavera, Chicken Marsala, Sliced Sirloin Beef, Chef's Medley of Vegetables, Roasted Red Bliss Potatoes, Assorted Dessert Display, Freshly Brewed Coffee and Tea

**COST: Adults: \$35
Age 12 & Under: \$15**

DEADLINE: Paid reservations must be received by Feb. 6th



TIME: 12 to 4 PM

12:15 Election of Officers & Cash Bar Opens

12:30 Lunch

Following Lunch will be the presentation of year end awards and BSTRA raffle.

Members, please bring your friends and family. Non-members welcome too! Come to this afternoon of fun, good food, awards, election of Officers and huge raffle!

Feb 16 AGM & Awards Banquet		Adult or Junior	Amount
Name			
Name			
Name			
Street Address			
Town, State, Zip			
Will Bring Something for the Raffle			

**If registering by mail, send Registration Form and check payable to BSTRA, Inc. to:
Suzanne Nicholas, 96 Mountain Gait Road, Ashland, MA 01721**

BITS & PIECES

2025 BOARD OF DIRECTORS: Are you passionate about preserving our beautiful trails and promoting outdoor recreation? Bay State Trail Riders Association (BSTRA) is seeking dedicated individuals to join our Board of Directors for 2025!

Joining our Board of Directors offers you a unique opportunity to make a meaningful impact on our community. You'll play a pivotal role in shaping the future of our trails, helping to conserve and enhance the natural beauty that we all cherish. Your leadership and vision will help guide our organization, ensuring that we continue to provide excellent recreational opportunities for riders and outdoor enthusiasts alike.

By becoming a Board member, you'll also have the chance to collaborate with a dynamic and passionate

team, all dedicated to our mission. Together, we can create memorable experiences, forge lasting connections, and inspire others to join us in our efforts. Your involvement will not only benefit the trails and our community but also provide you with invaluable experience and a sense of fulfillment.

If you're ready to make a difference and contribute to the legacy of BSTRA, we need you on our Board of Directors. Join us in 2025 and be part of something truly special. For more information or to express your interest, please contact any of our current board members. Let's ride forward together!

2025 TRAIL RIDES: Would you be interested in hosting a ride in 2025? Hosting a ride allows you to share your favorite trails with others and helps support our community. If you're interested, please let us know. Thank you.



THE MANE PLACE
POULIN GRAIN
 Leading Animal Nutrition

510 West Hartford Avenue
 UXBRIDGE, MA. 01569
 OPEN: TUES-FRI 9-5; SAT 9-4; SUN 9-1
 (508) 278-7563
 www.TheManePlace.com
 LINDA@THEMANEPLACE.COM

FEED, HAY & SHAVINGS,
 APPAREL, TACK, GIFTS,
 PET FOOD & SUPPLIES

FIND US ON






HOPE BOTANICALS

Jenna Brown
 503.680.1566
 info@hopebotanicals.com

hopebotanicals.com
 Wilsonville, OR • Granbury, TX



J.F. COVE INSURANCE AGENCY
 9 NORTH MAIN STREET, PO BOX 346
 UXBRIDGE, MA 01569
 TEL: 508.278.5544 FAX: 508.278.7200

MICHAEL D. COVE, PRESIDENT
 LICENSED INSURANCE BROKER
 MCOVE@THECOVEINSURANCEAGENCY.COM

WWW.THECOVEINSURANCEAGENCY.COM
 HOMEOWNERS • AUTO • BUSINESS • LIFE

MASS FRAMING CORP

Mike Fitzpatrick
 mikefitz60@gmail.com
 508-649-3301



PESTER BUILDINGS BUILD YOUR DREAM

POULIN GRAIN PROGRAM

When you buy Poulin grain for your animals, make sure to tell the clerk that you are a BSTRA member. That's all you have to do! We get .25 for each bag you buy. The collected bag amounts are remitted to Poulin and they send us a check. Participating dealers: Mane Place (Uxbridge).

EXCESS PERSONAL LIABILITY INSURANCE

A \$1 million Excess Personal Liability Insurance policy is an optional member benefit. Become an individual or family member of BSTRA and choose this valuable protection. This service is provided by Equisure, Inc. in cooperation with BSTRA. This program is not a source of revenue for BSTRA. Association Resource Group Purchasing Group (the Mater Policy holder) has arranged coverage with Certain Underwriters at Lloyd's London using Equisure Inc. as the agent. For details, please visit our website at www.bstra.org or email rzariczny@verizon.net

BSTRA CLOTHING

Please use this QR code to access our site to purchase BSTRA clothing. Or go to our website, click on the Support tab in the top header, then click on Merchandise Sales. There will be a link on that page that takes you to the "store". **NEW ITEMS ADDED**



SHOP iGIVE

When you log in & shop their 2,000+ stores (think Chewy, Walmart, Expedia and so many more), we'll earn donations at least TWICE what we earned through AmazonSmile. The average donation through an iGive store is about 3%, with some offering 25% or higher! Make it all automatic. Download the iGive Button & turn your browser into an automatic donation generating machine! Use the handy link on our website under the Support tab.

VOLUNTEER HOURS

You can now submit your volunteer hours online from our website. Please make use of this throughout the year so you don't forget what you did.

UNIBANK

Find a Banking Solution That Fits You.

Uniquely.

800-578-4270 customer.service@unibank.com

Yered
Trailers



View our HUGE selection of
new and pre-owned trailers
on our web site!

www.yeredtrailers.com



Since 1976...
New England's Premiere
Trailer Dealer

11 West Mill Street, Medfield, MA
508-359-7300 •

Hassanamesit Bridge Update

In 2023 I joined NEMBA and Grafton Trails Committee members to open up a blocked stream that had turned part of the trail into a quagmire.

This year the Grafton Trails Committee partnered with a Boy Scout working on his Eagle Scout project.

I am happy to report that a bridge has now been installed in this area. BSTRa donated the geo-textile material and it has been built to be horse safe. **BK**



Before



After



Diane Brazelton
Owner


67 West Boylston St, Unit 1
West Boylston, MA 01583
P 508.835.2773
F 508.835.2774
triplecrowntack.com

Mon - Fri 10-6
Sat 10-5
Sun (seasonal)



Jennifer M. Gosselin
AVP Branch Manager

282 Main Street
Douglas, MA 01516
WebsterFirst.com
P: 508.671.5151 • 800.962.4452 x5151
F: 774.823.1854
E: jgosselin@websterfirst.com




The CHESHIRE HORSE



Cashel

MOVE AHEAD

Upton Bridges Update

The property that Sudbury Valley Trustees (SVT) had trail work days at this past summer to establish connector trails just had two bridges installed.

Bob Hatch & Stephanie Frend have been working with SVT to supply the FRP bridges. With the help of Bill Knott and his skid steer, they worked to bring in the 12' and 16' bridges and get them installed. They did the installation work on Dec. 16, 18, and the 19th. Another worker that joined them from town was Scott Henderson. The ramps are unfinished but will have to wait for warmer weather **BK**

First bridge.



Second bridge. Bob Hatch & Bill Knott



The German Horse Muffin



All
Natural
Horse Treats
877-621-1023



Classifieds

Free ads are for members and their items only. Please contact the editor for advertising rates for non-member classified ads. Please submit your ad in writing (mail or e-mail) to the editor. Ads will only appear once unless you notify us to run it again. Ads must be received by the 15th of the month preceding publication.

Horse items for sale: Amigo Blanket-Fits 14.2 to 14.3 clean and waterproofed, medium to heavyweight Black - \$50.00 Roma - 2 Wick/easy-dry-cool all purpose saddle pads-1 plain quilted pad. All in good condition. \$5.00 each 1 Cotton string girth- 36" -\$15.00 1-Shedding Blade - \$1.00 Call Marty @ 508-561 8089

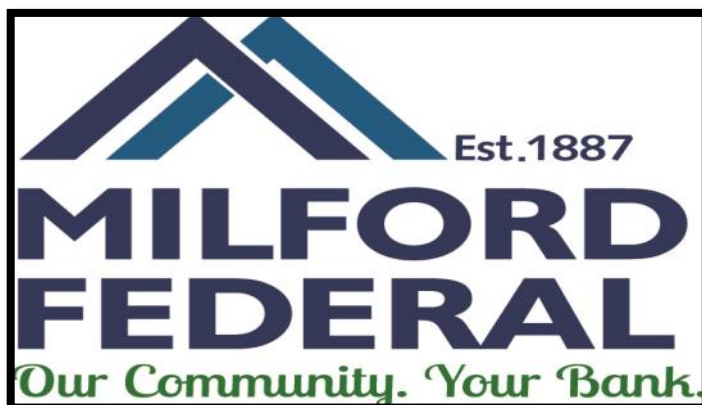
Golf Cart for sale: 4 passenger plus bed seat folds down. Gas motor, windshield, lights, aluminum frame. Asking \$3,500. Call Paul at 508-662-3301.

Wintex Isabella Dressage Saddle: Black, 17" seat, has interchangeable gullets (comes with medium and wide). Girth, irons, working diamond wool pad, and saddle cleaner. \$550. Email bstra@charter.net.

Saddle for Sale: Western 15" Imus Saddle, made for gaited horses. \$800.00 or BO Text Aurore@ 401-527-1950 for info and pictures.

Saddle for Sale: Custom Circle Y. Older, but in great shape. The fully hand tooled saddle leather is a mahogany color. It is accented with a rope edge with silver lacing. The horn is braided rawhide with silver lacing. The gullet is 6-3/4" wide which is considered semi- quarter horse bars. Set up for double rigging. The sheepskin is really good. 15" seat. Floral engraved conchos and matching pieces on saddle. One of a kind saddle. \$1,000. Pictures available. Email bstra@charter.net

BSTRA Board meetings are usually on the first Thursday of the month. If you wish to attend one of our meetings, drop us an email and we will send you the meeting link.



Business Classifieds

Short Term/Vacation Boarding: Walking High Farm has two run in sheds with separate fencing available for your short term needs. Going on vacation? We can take care of your horse, or both if you have two of them. Please call Becky for details at 508-476-3960 or bstra@charter.net

Horse Training, Horsemanship Lessons, Riding Lessons; Do you struggle with loading your horse onto the trailer? Want him to self-load? Need assistance with keeping your horse on the lunge line, overcoming stall or food aggression, catching a hard-to-catch horse, or improving your horse's whoa command? Enhance your relationship with your horse and develop new horsemanship and riding skills with our expert training. We offer versatile and liberty training, among other services, to help you and your horse achieve your goals. Call Cathie (508-479-5266) bobcatfarm.com and check us out on facebook @ Bobcat Farm

LOOKING TO SELL OR BUY HORSE PROPERTY

I service Central and Western MA from backyard farms to full equestrian facilities helping you to create life long memories. Why not have a Realtor that has been in the horse community for over 30 years. Sharron Cochran 413-668-7606
Sharron@equinehomes.com

"The Adventures of BB, the Wonder Pony" is an illustrated, first chapter children's book that will be enjoyed by readers of all ages. My Connemara Pony "BB" tells his life story in his own pony voice. BB talks about life as a foal, learning to be ridden, going to a variety of shows and having adventures with his big brother Cody. The illustrations are by a 12-year-old artist – really cute, on every few pages. You can contact me at sue.perry@charter.net to purchase a book, \$5.00 each plus shipping. You can also order the book on-line from Amazon at \$7.99.



Date (raindate)	Event/Location/Sponsor	Contact	Phone#	email address
Feb. 16	AGM & Awards Banquet, Sutton MA <i>Event sponsored by Mass Framing Corp</i>	Suzanne	508-380-2124	hc07645@gmail.com
May 19	Live Lark Acres Ride, Thompson CT	Becky	508-476-3960	bstra@charter.net
June 8	National Trails Day, Hubbardston MA			
Oct. 26	Big Pumpkin Ride, Upton MA	Joyce	617-429-1319	jskanion@charter.net
Nov. 16	Thompson Raceway Ride, Thomson CT	Becky	508-476-3960	bstra@charter.net

*NEHT affiliated rides

1. Unless otherwise noted, all rides start at 10 am and trail work days at 9 am
2. In case of questionable weather, call before leaving home. You will NOT be called if the event is cancelled.
3. Most rides require advance registration and payment to receive lunch.
4. Riders 17 years old and under, accompanied by a guardian, ride **free** (includes lunch if pre-registered). (May be exceptions on some rides)
5. Alcohol is prohibited on State property. No smoking allowed while riding.
6. A current Coggins within a year of the ride date is required.
7. Please leave the trails and parking areas better than you found them and be considerate of others! Clean up your hay & manure at all rides!
8. Year end awards require a member in good standing to have a minimum of 4 hours of volunteer time completed.

BSTRA will be running another Top Trail Miles Challenge for 2025. BSTRA members who are also members of Top Trail are eligible to compete. In 2024 there were six active participants in the challenge. I must say it has been quite competitive with still a few days left to complete the challenge. Seeing everyone's progress certainly encouraged me to ride more!



The contest rules are the same as last year. You must be a current member of the Bay State Trail Riders Association to join the Top Trail affiliate group challenge. An annual award will be given to the BSTRA member with the most miles ridden or driven January 1 to December 31st. BSTRA members must meet the 4-hour volunteer requirement to be eligible for the award.

To upload a ride, you can use your current GPS tracker and export the file for the ride. The file can then be uploaded to Top Trail to capture the ride.

Qualifying trail miles must be uploaded to Top Trail within two weeks of the ride. To learn more or join Top Trail, go to <https://toptrailhorse.com/>. Annamaria Paul

In 2025, we're seeking passionate individuals to help us steer this organization forward. Every contribution, no matter the size, makes a difference. For more information, reach out to any Board member.



Bay State Trail Riders Association, Inc.

24 Glen Street
Douglas MA 01516



JANUARY 2025

We are on the web!

www.bstra.org

Bay State Trail Riders Association, Inc. Membership Application (expires December 31st)

Mail this form with check payable to **BSTRA, Inc.** to: Rose Zariczny, 216 Grand Street, Woonsocket, RI 02895

Name: _____ phone: (_____) _____
Do NOT release my name for discounts or coupons to benefit BSTRA []

Address: _____ email: _____
(# & street) (town/city) (state/zip)

Please check all that apply:

Single **\$25** [] \$1m excess liability insurance (single), additional **\$25** [] Junior (17 and under) **\$12** []

Family **\$35** [] \$1m excess liability insurance (family), additional **\$50** [] Individual Lifetime Membership **\$400** []

Printed Bugle **\$25** []

Additional Barn Membership **\$35** [] Barn Name _____

Additional donation to this 501(c)(3) corporation \$_____. Your tax exempt donation will be acknowledged.

I'd like to receive **Community Horse**, published Spring & Fall, at no cost to me []

I can help

- by volunteering for trail work days []
- by sponsoring a trail ride (\$) []
- by hosting/running a trail ride []
- with other projects that might be needed []
- by serving on the Board of Directors [] Committee []
- with _____

Questions? rzariczny@verizon.net or 401-487-3190

Thank you for your support. Happy Trails!