

# Bay State Trail Riders Association's 2022 Annual Report

This has been a year of transition and growth for BSTRA that will continue into 2023 as we continue to implement various committees and incorporate younger members onto our Board.

Implementing Board Governance procedures will make us more effective as we celebrate our 50<sup>th</sup> anniversary in 2023 and ensure our longevity.

We hope you enjoy reading our report as we did accomplish quite a bit in 2022 which is due to our donors and volunteers.

Sincerely, *Becky Kalagher, President*



# What did we do in 2022?

We held:

13 rides with a total of 503 riders attending

2 campouts 1 tack sale 1 clinic

6 scheduled trail workdays

Booth at the Equine Affaire

Set up a BSTRA You Tube account

106 hours attending meetings. (Open Space, Friends of a State Forest, land trusts, webinars on trails, or public hearings representing horseback riders)

Donated \$500 to the Wyndham Land Trust to preserve 90+ acres in Thompson CT (they allow horseback riding!)

48.82 Total trail project hours (this was overseeing projects being done, work on ones that will be done, and assessing areas for future projects.)



# TRAIL WORK & PROJECTS IN 2022

Bay State Trail Riders Association, Inc.

On just these projects the total amount put back into  
trails was **\$52,171** (with \$37,413 of that in cash).



## BSTRA PROPERTY – DOUGLAS MA

WORK STARTED ON CLEARING THE CONNECTOR TRAIL. 4.85 HOURS OF PREWORK DAY CHAINSAW WORK. 14 PEOPLE PUT IN 48.5 HOURS OF WORK TO CLEAR THE MAIN CONNECTOR TRAIL AND MOST OF THE OTHER SMALL LOOP TRAIL. VALUE OF OUR VOLUNTEER LABOR IS \$1,758.42 PLUS LUNCH OF \$127.79

**Douglas State Forest Park Serve Day** – We completely cleared and brushed back the TNT Trail (.46 miles long). 10 people put in 41.16 hours worth \$1,356.63 plus \$115.08 for lunch.





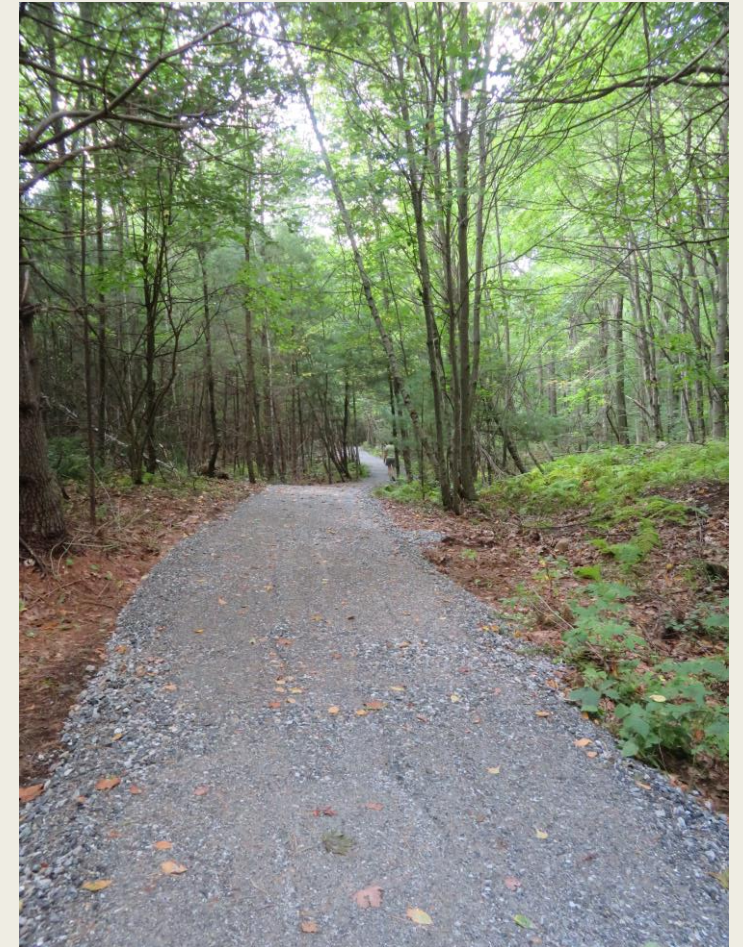
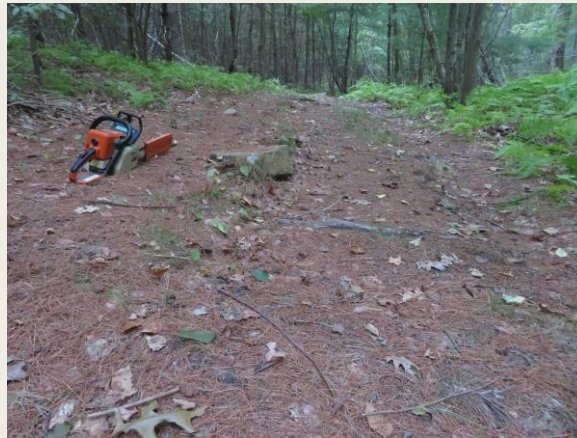
**PARK SERVE DAY UPTON STATE FOREST** - JOINT TRAIL WORKDAY WITH THE FRIENDS OF THE UPTON STATE FOREST. TARGETED OLD HOPKINTON SPRING TRAIL TO A NEW CONNECTOR TRAIL AND PICKED UP TRASH. WE HAD 14 PEOPLE WITH A TOTAL OF 45 VOLUNTEER HOURS WORTH \$1,483.20

**HODGES VILLAGE DAM OXFORD MA** – We targeted Arrow on Fire Trail (.4 mile long) to brush and cut back as it was getting quite overgrown. Running one brush cutter and battery-operated hedge trimmer, 10 people successfully finished this trail. We put in 36.17 volunteer hours worth \$1,192.16 plus lunch \$88.48



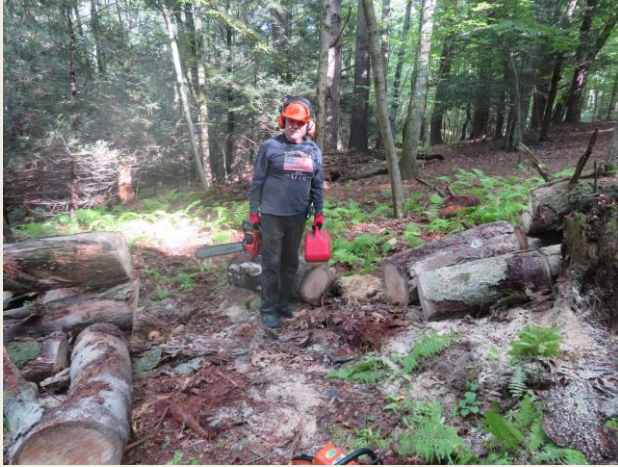
# Hinterland Trail Project - Grafton MA

This trail had a section (.2 mile long) at the bottom of the hill that was severely washed out, which means it was a rocky muddy mess. We hired CJM Construction Co. to do the work. They spent 5 days completing the job. Volunteer hours 6.25 worth \$206. CJM Construction \$14,750. Kimball Sand Co. \$5,411.74 Donated load of gravel by Kimball Sand Co. \$476.61. Total project value **\$20,844.35**



## BSTRA property Trail Workdays. Douglas MA

Sept. 21<sup>st</sup> two people running chainsaws to cut up all the big stuff we needed to clear from the small trail loop.  
Sept. 24<sup>th</sup> (National Public Lands Day) seven people set out to clear up all the cut-up tree parts, trimming up and using a backpack blower to “clear” the trail. All totaled for both days we put in 15.5 hours of volunteer work worth \$510.88



# Eagle Scout Project – Hopkinton MA

Ash worked with the Trustees of Reservations, Blackstone Valley Chapter NEMBA and BSTRA to get this project done. This piece of property had a wet area and Ash wanted to build a boardwalk to mitigate the problem. BSTRA donated the geo-textile material (\$180) and 4 hours of volunteer work (\$131.84) to help finish up the boardwalk and install the geo-textile material and pea stone to make the boardwalk slip proof. Total by BSTRA \$311.84



# Hinterland Trail Work – Grafton MA

On Oct. 15<sup>th</sup> four people gathered to put the finishing touches on the work that had been done on this trail. Since the fill was deep in areas, we wanted to shore up the sides with rocks plus where the work ended, we wanted to shore that up also so the water running down the trail above it would be diverted off the side so as not to erode the new work. A total of 8 hours worth \$236.68 was volunteered.



# Red Pine Trail - Douglas MA

We targeted this trail as a section of it was always muddy. It was a low area that didn't dry out and had an intermittent stream.

Construction work started Oct. 10<sup>th</sup> and took three days to finish. 700 feet of trail was greatly improved. Engineering design for wetlands \$5,243.66. CJM Construction for labor/machine work \$8,300.

Erosion control \$715. Pyne Sand & Stone Co. gravel \$2,583.31.

Donated gravel \$855.69. Total to date is **\$17,697.66**. We are still waiting for the boardwalk to be shipped so we can get that installed.



# Department of Conservation & Recreation's Partnership Award Program

We applied for and was approved for the matching partnership award program to purchase a flail mower for the Douglas State Forest. The sickle bar they were using to keep the brush cut back on the trails died. BSTRA paid \$3,820 and DCR matched that amount (2 to 1) with \$7,640 for a total of \$11,460.

Our scheduled trail workdays had a total of 191.33 volunteer hours

Trail work done outside of the scheduled trail workdays totaled 246.96 volunteer hours.

Total trail work hours were 438.29

Towns that we impacted trails in Massachusetts were Douglas, Grafton, Hopkinton, Hubbardston, Oxford, Mendon, Upton, and Winchendon. In Connecticut the town of Thompson.

Total volunteer hours for all volunteer work was 1,550 hours valued at \$51,088 using the Independent Sector value of \$32.96 for Massachusetts.

# Recognizing our Sponsors and Donors

## **Platinum Sponsors**

Bay State Savings Bank  
Equinety  
Homefield Credit Union  
Whitehorse Truck & Trailer Sales  
Yered Trailers  
Whole Foods

## **Deluxe Blue Ribbon Sponsors**

Corinthian Insurance Agency  
Straight Arrow Products, Inc.  
Davis  
The Mane Place  
Horse Feathers Academy Julie Dillon  
Cove Insurance Agency  
EquidDoc Veterinary Service  
Willow Brook  
UniBank  
Pyne Sand & Stone Company

## **Blue Ribbon Sponsors**

Ocean State Equine Associates  
Bay Side Resort  
Milford Federal Bank  
Savers Bank  
Azrael Acres  
DS Graphics  
New England Drywall  
Koopman Lumber & Hardware  
Neighborhood Insurance Agency  
Stethoscope.com  
Cashel  
Crothers Tire  
Dillon's Equine Dentistry

Horse Lovers Outlet  
Bellingham Animal Hospital  
The Saddle Shed  
Swerling, Milton, Winnick Public Insurance Adjusters  
Cabot  
Massachusetts Equine Clinic  
McIntyre Loam, Inc.  
Paresky Flitt & Company, LLC  
A Stitch "n Good Time  
Dean Bank  
Hope Botanicals  
Kerrits  
VisiMark

## Sponsors & Donors

Abbey Kennels  
Avon-Karen Parlin  
Big Dee's Tack & Vet Supplies  
Chained Leather  
CJM Construction, Inc.  
Forever Fork  
Graham Equine Complementary Medicine  
Hummingbird Holistic Center  
Liv Salon  
North Creek Farm  
Riding Warehouse  
The English Saddler  
W F Young (Absorbine)  
Wegman's  
Kimball Sand Company, Inc.  
Douglas House of Pizza  
Capobianco Family  
Ruth Hostak  
Marlene Kamas  
Kathy Richards  
Mary Wood  
Katherine Petersson  
Ashley Freeman  
Kathy Budrow

Area Glass  
Barefoot n' Crazy Ranch  
Bobcat Farm  
Chevere Beads & Boutique  
Equine Chiropractic  
From the Horses Mouth  
Gregory's Restaurant & Pizzeria  
Kerrits  
Mass Renewables  
ParaScreen  
Simply Designs & Printing  
Tory Leather, LLC  
Webster First Federal Credit Union  
Wych Family Dental  
Hay Chix  
Carol & John Bloniasz  
Lynea Connely  
Donna Johnson  
William & Agnita Knott  
Rich Senerchia  
Nancy Larkin  
Keith Tornifoglio  
Cynthia Freeman  
Brian Gartland

Athletic Brewing Company  
Betsey MacDonald Original Art  
Castle Plastics, Inc.  
Chiropractic Health Center  
Equus Magnificus  
Gary Shults Horseshoeing  
Horse Tech, Inc.  
Klems  
Mill Valley Veterinary Clinic  
Print & Play  
Stop & Shop  
Triple Crown Tack Shop  
Webster Five Cents Savings Bank  
Walmart  
Pyne Sand & Stone Company  
Robert & Patricia Booker  
Sheila Giguere  
Jonathan Kalagher  
Bonnie LePage  
Sue Sanders  
Joyce Hillman  
Heather Galas  
Saddle Brook Farm  
Michael Crepeau

## Sponsors & Donors

Tim Hagerty  
Erick Lambert  
Michael Renand  
Nate Wuorio  
David Chartier  
Dan O'Brien  
Paul Levereault  
Nick Morin  
Mike Paparo  
Teddianne Parent  
Charles Cheney  
Becky Kalagher  
Annamaria Paul  
David Maenzo  
Mark Remlinger

BSTRA gratefully acknowledges these companies and individuals for supporting the work that we do. Without their help the trail improvements that we made would not have been possible.

Trails reveal nature's hidden treasures and encourage kids, as well as adults, to adopt healthy lifestyles. Trails are the ribbons that connect us, lead us, and expand our horizons. For these reasons, BSTRA is committed to keeping our communities' trails preserved and maintained for outdoor recreation and fitness.

Thank you for believing in us! Bay State Trail Riders Association, Inc.

